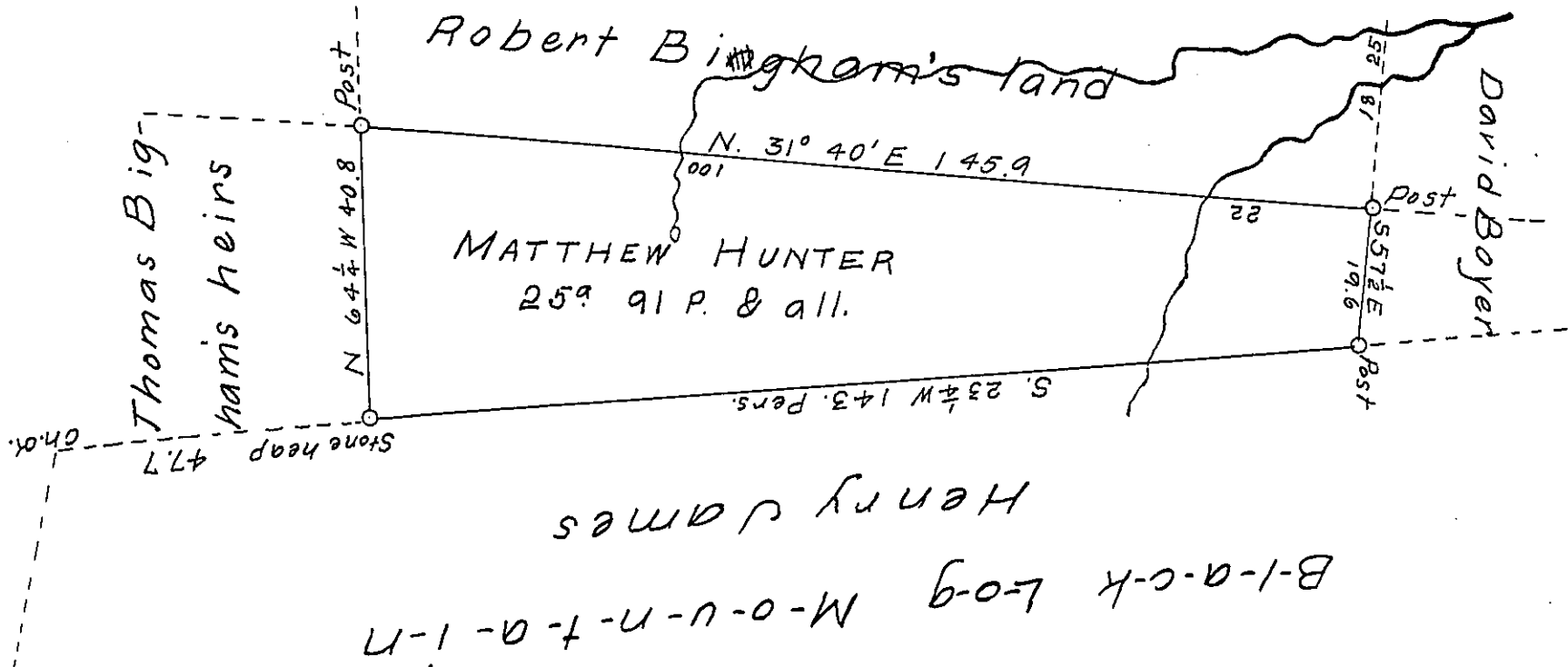


J-o-h-n H-o-l-l-i-d-a-y S-u-r-v-e-y  
John Love now



A draft of a tract of land containing twenty five acres and ninety one perch and allowance of six per cent for roads &c. Situate in the Township of Shirley, in the county of Huntingdon. First surveyed on the 25<sup>th</sup> day of March 1794 by Patrick Galbreath for John Canan Esq. then D.S. in pursuance of a warrant granted to Mathew Hunter for 50<sup>95</sup> dated the 6<sup>th</sup> day of March 1789. and re-examined and corrected the 21<sup>st</sup> & 22 days of July A.D. 1859 by J. Simpson Africa and Rere-examined and found correct the 6<sup>th</sup> day of March A.D. 1869.

To J. M. Campbell Esq }  
Surveyor General }

James E. Glasgow C.S.  
Hunt. Co.

IN TESTIMONY that the above is a copy of the original remaining on file in the Department of Internal Affairs of Pennsylvania, made conformably to an Act of Assembly approved the 16th day of February, 1833, I have hereunto set my Hand and caused the Seal of said Department to be affixed at Harrisburg, this twenty-sixth day of June 1905

*Loaeh Brown*  
Secretary of Internal Affairs.